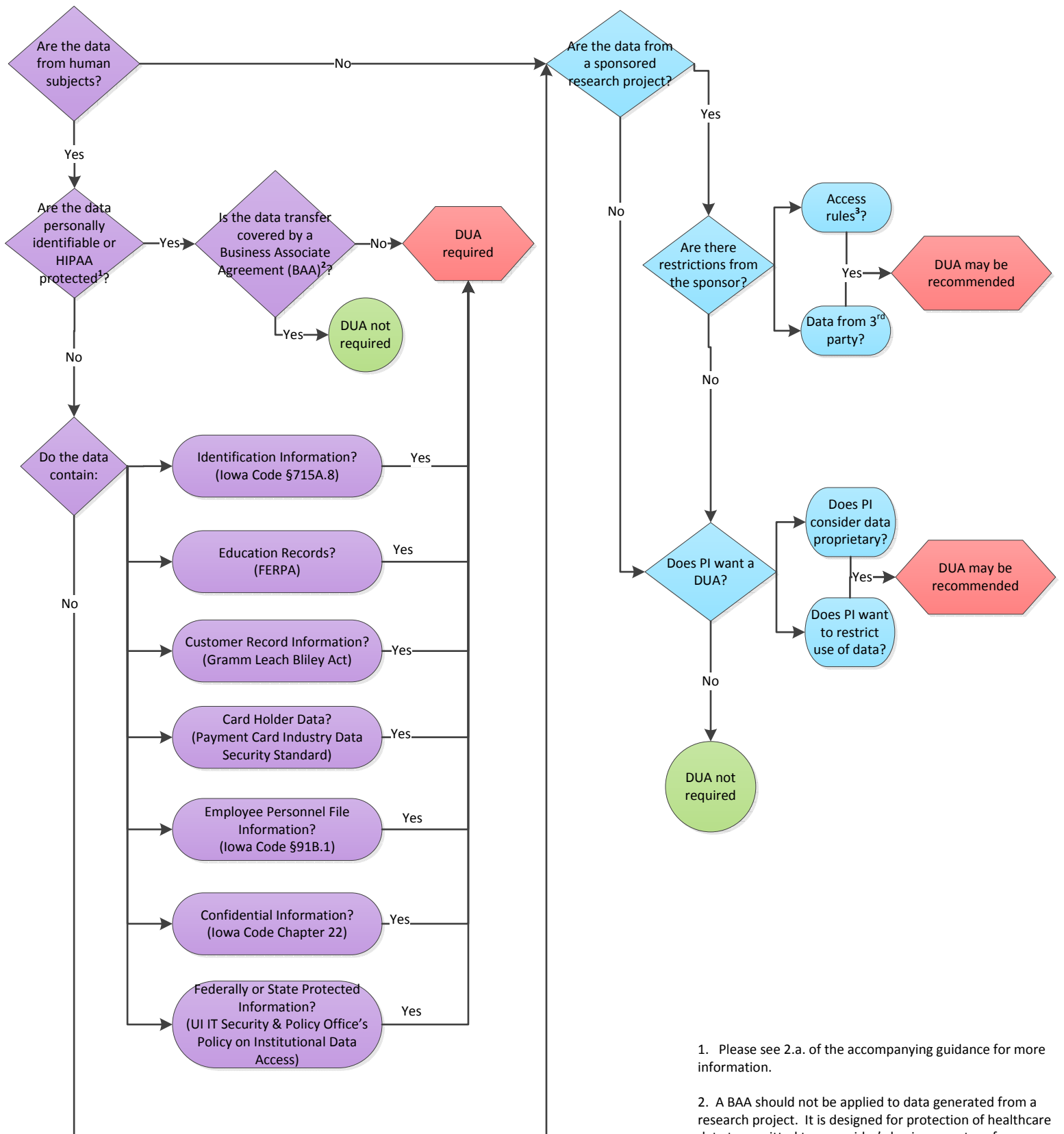


Exhibit A: Is data sharing permitted?



Exhibit B: Is a Data Use Agreement Needed or Recommended?



1. Please see 2.a. of the accompanying guidance for more information.

2. A BAA should not be applied to data generated from a research project. It is designed for protection of healthcare data transmitted to a provider's business partner for execution of business responsibilities.

3. Examples of access rules could be the rules governing a public database where PI obtained data, or limitations present in the funding agreement that supported the collection of the data. Contact DSP to learn more.